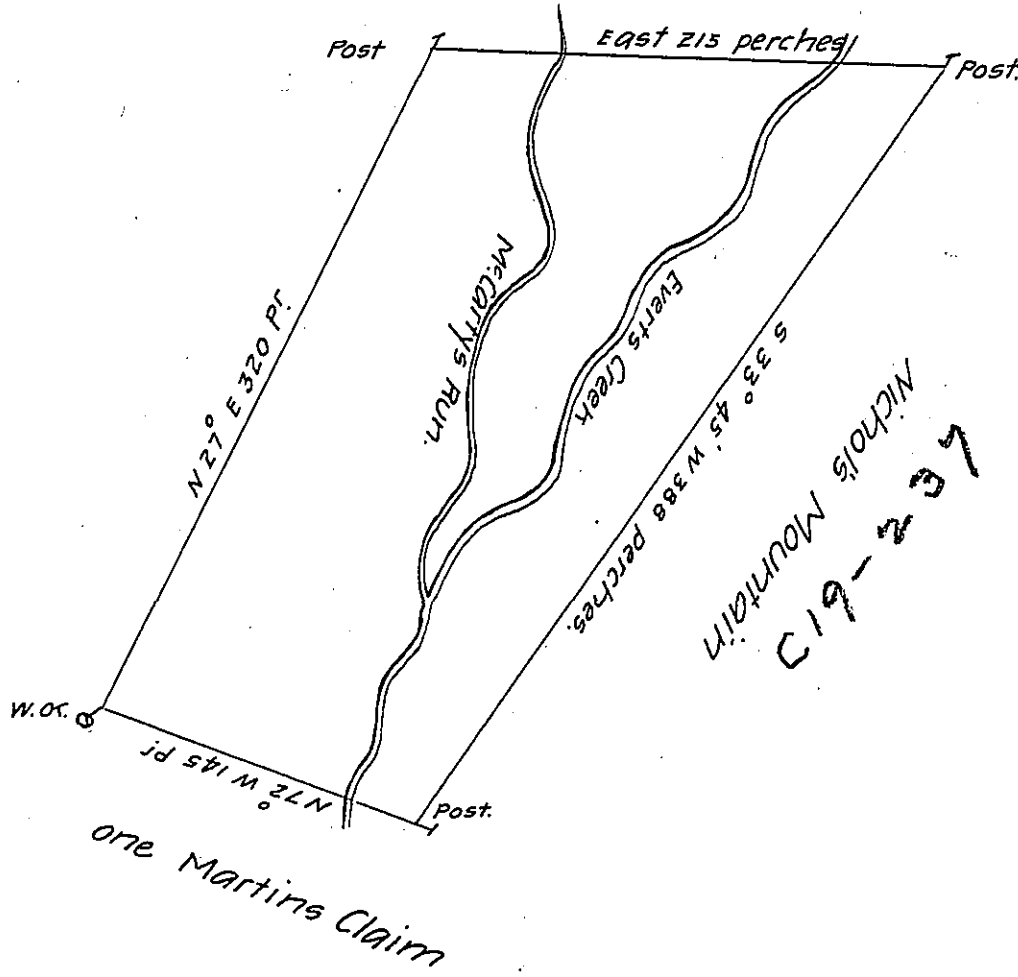


C 222-59
Thomas Hutchins



A Draught of a Tract of Land Situate on Everts Creek & McCarty's Run in the County of Cumberland containing Three Hundred and forty four acres and a quarter and the usual allowance of six acres P.Ct for Roads &c. Surveyed the second day of November 1767 for Thomas Smallman in pursuance of an order No. 3348, dated the third day of April 1767.

P. Richard Tea Depy Surveyr

To John Lukens Esqr
Surveyor General

IN TESTIMONY that the above is a copy of the original remaining on file in the Department of Internal Affairs of Pennsylvania, made conformably to an Act of Assembly approved the 16th day of February, 1833, I have hereunto set my Hand and caused the Seal of said Department to be affixed at Harrisburg, this tenth day of March 1905.

Joseph P. ...
Secretary of Internal Affairs